

# AUCTION

TIMED ONLINE

OPENS  
September 15

CLOSES: TUESDAY, SEPTEMBER 22 | 10AM 2020

PREVIEW: Monday, September 14 & Tuesday, September 15  
LOADOUT: All items to be picked up within two weeks of closing date

### TRACTORS

**1995 Case-IH 9270**, 855 Cummins, 12 spd., 4 hyd., 335 hp., integrated auto steer, Outback guidance system, 520/85R42 band duals, 5,477 hrs., extra front drive shaft universal joint, S/NJEE0032837

**1994 Case-IH 7240**, MFWD, powershift, 3 pt., 3 hyd., 540/1000 PTO, low pressure return flow, (14) front suitcase weights, front spacers, 16.9-28 front tires, 18.4-32 rear duals, 4,680 hrs., New water pump, timing cover update, S/NAJB0071208

### COMBINE

**1992 Case-IH 1680**, axial flow, PRWD, Cummins, rock trap, chopper, external sieve adj., quick tach straw spreader, hyd. fore/aft valve added, updated auger bed bearings, poly hopper inserts, cross flow fan, long cleaning shoe, round bar, small & large wire concaves, rear weight brackets, New radiator, belts, pulleys, sprockets, chains, & bearings, New elevator chain, augers & wear parts, modified rear panels to swing out, New unloading auger tube & feeder house shields, rebuilt trans. & hyd. pumps, remfg. final drives, ladder ext. & scrapers, one season on 30.5L32 tires w/duals, New 16.9-26 rear tires, 2,768 sep. hrs., 4,297 engine hrs., extra hyd. filters, expansion valves, rasp bar parts, chopper blades, etc., Extensive rebuild in 2018, S/NJCC116100

### HEADS & HEADER TRAILERS

**2003 Case-IH 2206 non-chopping corn head**, 6x30", poly snouts, hyd. deck plates, fully rebuilt, 300 acres on New Calmer chopping rolls, S/NHAJ0018090

**2002 Case-IH 1020 flex head**, 30", finger reel, fore/aft, sickle guards, crop dividers, 1-1/2" sickle sections, New wobble box w/extra remfg. box, New bearings & belts, spare sickle, sickle guards, sickle bolts, finger guides, fingers, S/NJCO328095

**Case-IH 1010 rigid head**, 25", bat reel, sickle guards, pickup guards, rebuilt wobble box, New belts, bearings, cutter bar, S/N001226

(2) Single axle header trailers, 30'

Shop-built single axle header trailer, 20', ball hitch, 245/75R16 tires

Shop-built header trailer, on Lundell 2070 running gear, 12.5L-15 tires

### GRAIN CART

**Ficklin CA13000 grain cart**, 600 bu., 14" folding corner auger, 1000 PTO, roll tarp, sight glass, 24.5-32 tires, New jack stand

### AIR DRILL

**1995 Case-IH 8600 air drill**, 30", 7" spacing, 3-section fold, single compartment, ground drive, hyd. fan, rubber packing wheels, track wackers on cart, never had fertilizer, full run monitor for each tube, New tubes & discs, spare brain box

### PLANTER

**White 6180 vacuum planter**, 16x30", 2 pt., front fold, rebounders, insecticide boxes, double rubber closing wheels, hyd. folding markers, 300 gal. poly tank, in-furrow liquid fertilizer, White SM3000 monitor, electric fertilizer pump, rebuilt row units, New discs, rock guards, Y-splitters, monitor & control, small corn/medium corn/popcorn/soybean plates, includes plates to replace insecticide boxes, always tarped w/25'x29' heavy duty tarp, S/N606154

### TILLAGE EQUIPMENT

**DMI 530B Ecolo-Tiger disc ripper**, 20" discs, 5 shank, 30" shank space, rear leveling discs, 3-bar HD harrow, New points, field ready, S/N823704

### TILLAGE EQUIPMENT

**DMI crumbler**, 30', 3-section, rolling basket, replaced basket bearings, factory weights

**Wil-Rich 3400 cultivator**, 33', 3-section fold, walking tandems, 300 gal. poly tank w/mount, rear hitch, rebuilt cylinders, extra rebuilt cylinder

**Wil-Rich 4400 chisel plow**, 22', 3-section fold, horizontal shanks, rebuilt cylinders, walking tandems, 3-bar harrow

**Kewanee tandem disc**, 20', 3-section, scrapers

**Melroe harrow**, 50', 5-bar

**Melroe 903 plow**, 8x16", front coulters

### ROW CROP EQUIPMENT

**Lilliston/ Bush Hog rolling row crop cultivator**, 12x30", 3 pt., w/folding bar, gauge wheels

**Noble Ro-Runner row crop cultivator**, 8x30", 3 pt., S-tines, rolling shields

**Alloway row crop cultivator**, 8x30", 3 pt., S-tines, shields

**John Deere 400 rotary hoe**, 21', 3 pt., cab guard, S/N063663

### SEMI TRACTOR & TRUCK

**1984 Peterbilt 349 tandem axle day cab**, Cat 3306, 270 hp., Eaton Fuller 8 spd., air seat, air slide 5th, diff lock, wet kit, 529 rear ends, Walker axle w/rubber cushion, 1/2 fenders, 11R22.5 tires on steel, shows 57,000 miles (not actual), New drive shaft & transmission brake, New radiator for clutch, New battery & starter, recent work

**1986 IHC S2500 tandem twin screw**, L10, Eaton 9 spd., 300 hp., ether start, 20' box, Shur-Co quick tach roll tarp, mud scrapers, cab guard, rear tow hitch, choker chains, plumbed for drill fill, side ladder, reinforced Saf-T-Pull, New battery, 114,770 miles

### HOPPER BOTTOM & OTHER TRAILERS

**1993 Jet tandem axle hopper bottom**, 30'x96"x62", spring ride, roll tarp, bottom or side discharge, 11R22.5 tires on steel rims

**1978 East tandem axle end dump**, 28', spring ride, aluminum quick tach roll tarp, 11R24.5 tires on steel rims, New poly floor & side boxes

**Versatile trailer**, 56"x40" platform, walking tandems, 8.00-14 tires

### SPRAYER & SPRAY TRAILER

**Summers Supersprayer pull-type sprayer**, 90', 2 pt., 750 gal. poly tank, dual nozzle bodies, wind curtains

**1995 Trailmobile single axle van body water trailer**, 28', spring ride, side door, (2) 1,500 gal. tanks, (3) totes, (2) tote pumps, Honda GX160 motor, Super Reel hose reel, 30 gal. mix cone, PH6 plumbed, asst. 2" hose/connectors, 11R22.5 tires on steel rims

### GRAIN HANDLING EQUIPMENT

**Westfield MK100-61 unloading auger**, 61'x10", 540 PTO, hyd. lift Westfield hyd. end gate drill fill, poly auger

### OTHER EQUIPMENT

**Rotary grass seeder**, 3 pt., 540 PTO

**3,000 gal. poly tank**, 2" outlet

### PARTS & FARM SUPPORT ITEMS

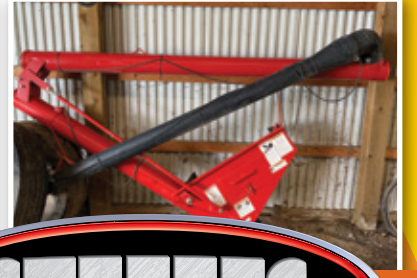
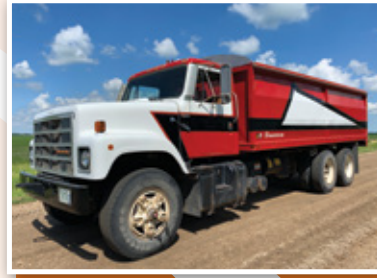
**Case-IH 1680 rear axle**, (2) extra rims, (2) 14.9-24 tires, off 1680 combine

**White 16-row single closing wheel**, w/brackets, off 6180 planter

**Case-IH grain elevator chain out of 1680 combine**, clean

**Case-IH 1680 6-volume service manual set**

**Case-IH 1680 parts catalog**



# SteffesGroup.com

Steffes Group, Inc., 2000 Main Avenue East, West Fargo, ND 58078 | 701.237.9173



TERMS: All items sold as is where is. Payment of cash or check must be made sale day before removal of items. Statements made auction day take precedence over all advertising. \$35 documentation fee applies to all titled vehicles. Titles will be mailed. Canadian buyers need a bank letter of credit to facilitate border transfer. Scott Steffes MN14-51, Brad Olistad MN14-70, Max Steffes MN14-031, Justin Ruth MN14-041

